



PUTTERILLS

est. 1992

£895 Per Month
Haygarth
Knebworth, SG3 6HF

PROPERTY SUMMARY

A modern one-bedroom apartment which is perfectly positioned with easy access to both Stevenage and Welwyn Garden City as well as walking distance to Knebworth train station, this one-bedroom apartment offers both flexibility and functionality.

This modern apartment provides self-contained accommodation within the complex and is located on the ground floor. It comprises a separate kitchen, living room, double bedroom, bathroom and two built-in wardrobes with a multitude of storage spaces.

1



1



1

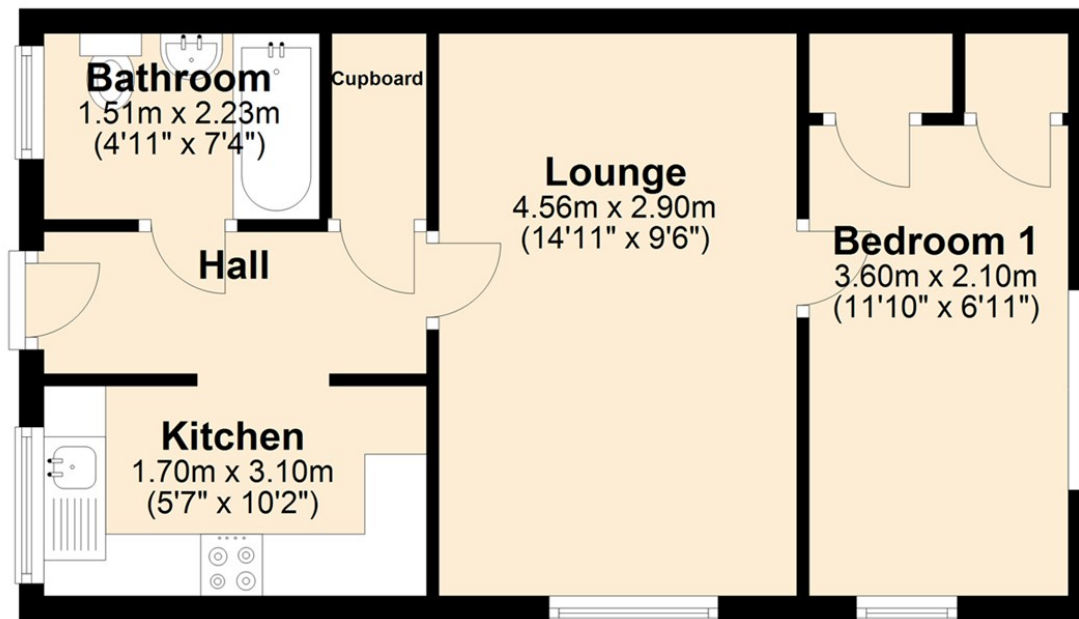






Ground Floor

Approx. 37.4 sq. metres (402.3 sq. feet)



Total area: approx. 37.4 sq. metres (402.3 sq. feet)

LOCAL AUTHORITY

NHDC

TENURE

COUNCIL TAX BAND

B

VIEWINGS

By prior appointment only

Energy Efficiency Rating		
	Current	Potential
Very energy efficient - lower running costs		
(92 plus) A		
(81-91) B		
(69-80) C		
(55-68) D		
(39-54) E		
(21-38) F		
(1-20) G		
Not energy efficient - higher running costs		
England & Wales		EU Directive 2002/91/EC

Agents Note: Whilst every care has been taken to prepare these particulars, they are for guidance purposes only. All measurements are approximate and are for general guidance purposes only and whilst every care has been taken to ensure their accuracy, they should not be relied upon and potential buyers/tenants are advised to recheck the measurements



OFFICE ADDRESS

Putterills Lettings
123 London Road
Knebworth
SG3 6EX

OFFICE DETAILS

01462 419333
lettings@putterills.co.uk
www.putterills.co.uk